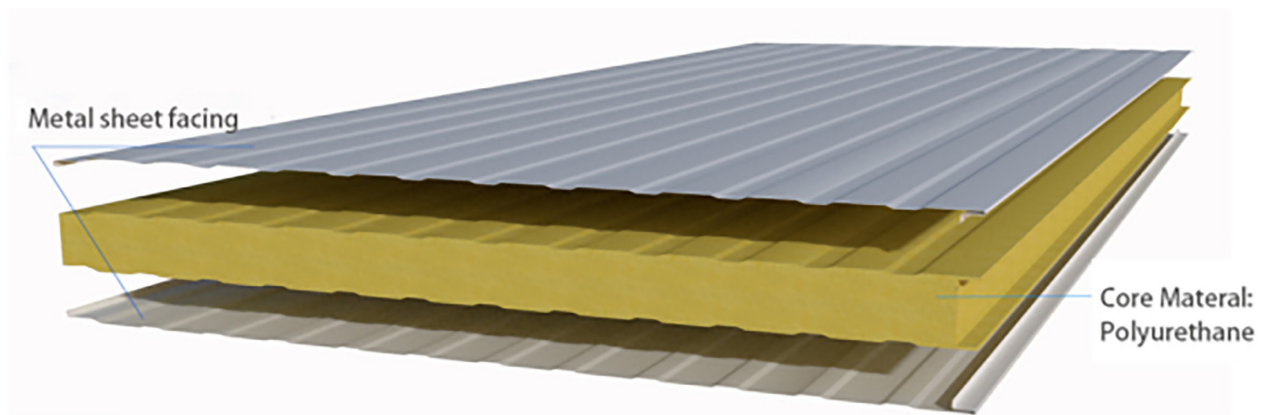


Cool Box Inc.

2914 Canal St. Suite 2914, Houston, TX 77003

Phone number: (832) 967-0667



Slip joint type pu sandwich panel is produced by our imported continuous production line. It consist of two layers metal facing and one layer polyurethane.

Metal Thickness: 0.5mm PPGI/0.5mm PPGI(25 Guage)

Thickness: 100mm(4")

Width: 1125mm(44.3")

Length: Less than 11.9 meter(39' Long)

Weight: About 158.6 KG Each Piece

Details:



Glass Door

Display Cooler

2-pane non-heated (NT)glass

Glass: 4MM tempered heating glass + aluminum spacer + 3MM float glass + 4MM tempered glass,

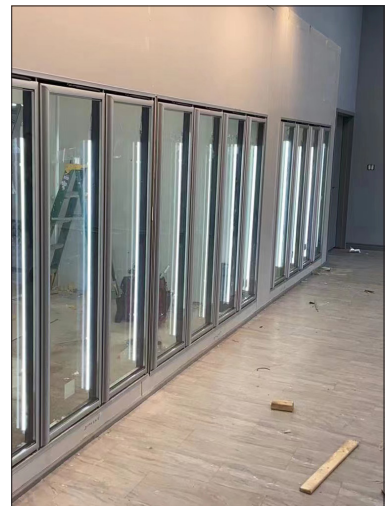
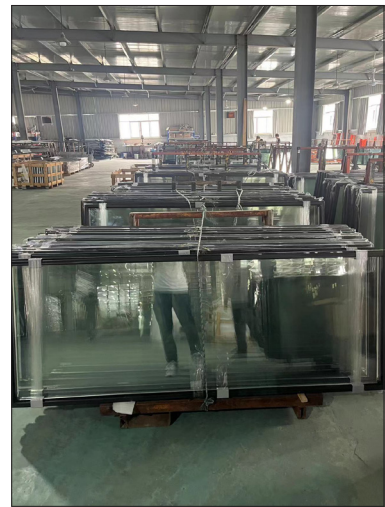
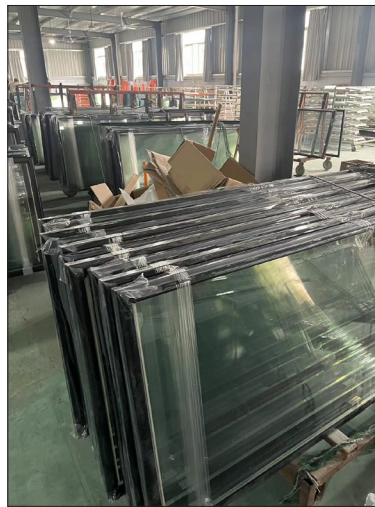
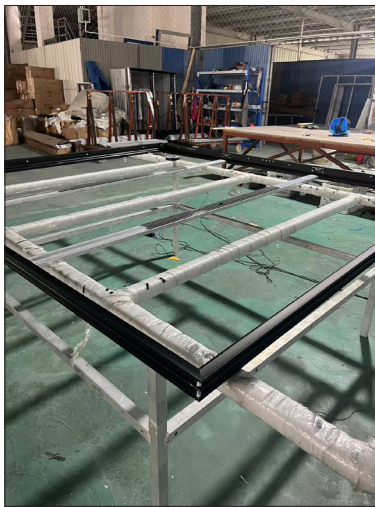
Door frame: black aluminum alloy, with heating,

Accessories: door seal, 90 degree positioning, rebound, integrated handle, LED lamp (110V, 60HZ, 22W), capacitor

Left door open

Four Sides with lip;---- Left and right swap type

Whole Length Handles.



Beer Cave Door

Beer cave window
With heating, LED lights, to be determined
Door opening: 760X2007MM
(30"x79")



Access Cooler Door

All buried hinge door

Door frame size: 2400x1168mm (8'x4')

inner & outer with 2mm thick diamond plate 600x914mm)

Door opening: 914x2057mm(36"x81")

